



JAYESHI
Callisto

*Our success is
because of you !*



Plot No. B 58, Sector-16
Ulwe, Navi Mumbai



JAYESH
Callisto





PROJECT AMENITIES & FEATURES

• FLOORING

Vitrified Tiles Flooring (2'x2') In All Rooms.

• KITCHEN

Granite Kitchen Platform With S.s. Sink,
Glazed Tiles Up To Beam Level.

• BATH/W.C.

Glazed Tiles Up To Beam Level.
Good Quality Sanitary Fitting.

• DOORS

Main Door & Bedroom Doors With
Decorative Laminate.

• WINDOWS

Powder Coated Sliding Window.

• COLORS

Acrylic Paint On Internal Walls & Apex
Paint On External Walls.

• WATER TANK

Underground & Overhead Tank
Withadequate Storage Capacity.

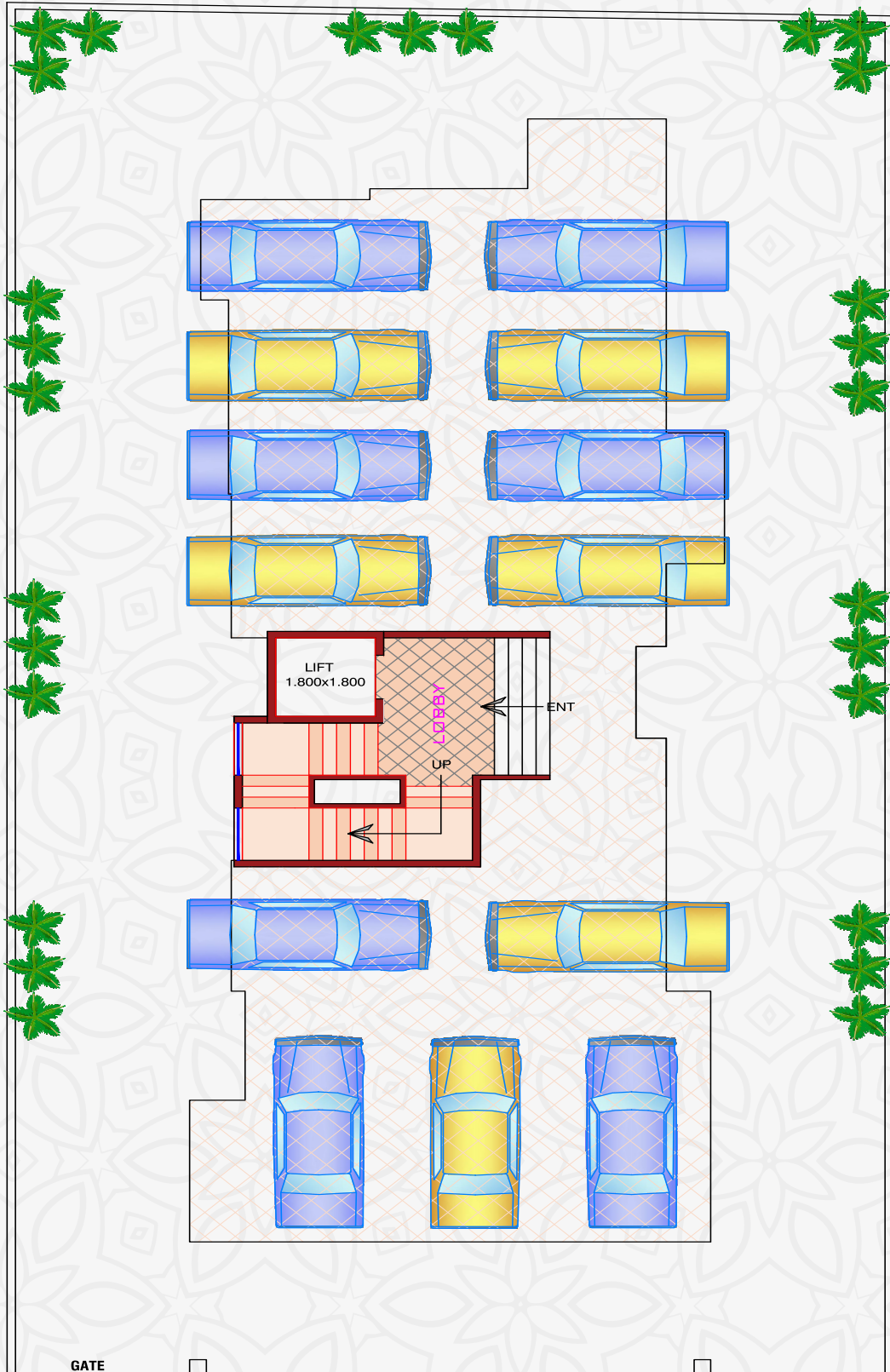
• EXTRA

Special Water Proofing Treatment
With China Chips.
Decorative Entrance Lobby Stack Parking.

Plot No. B 58, Sector-16
Ulwe, Navi Mumbai



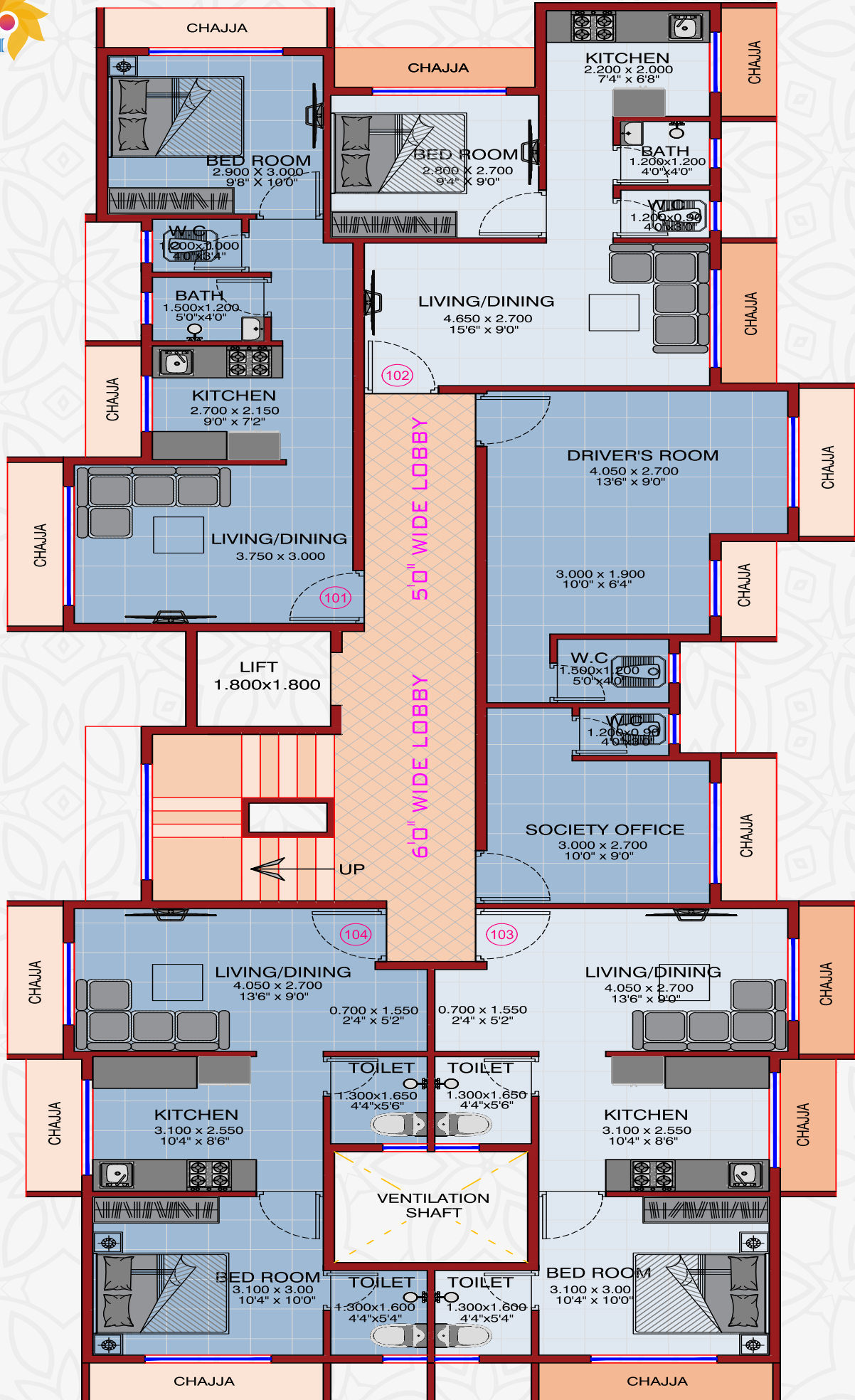
" JAYESH CALLISTO "



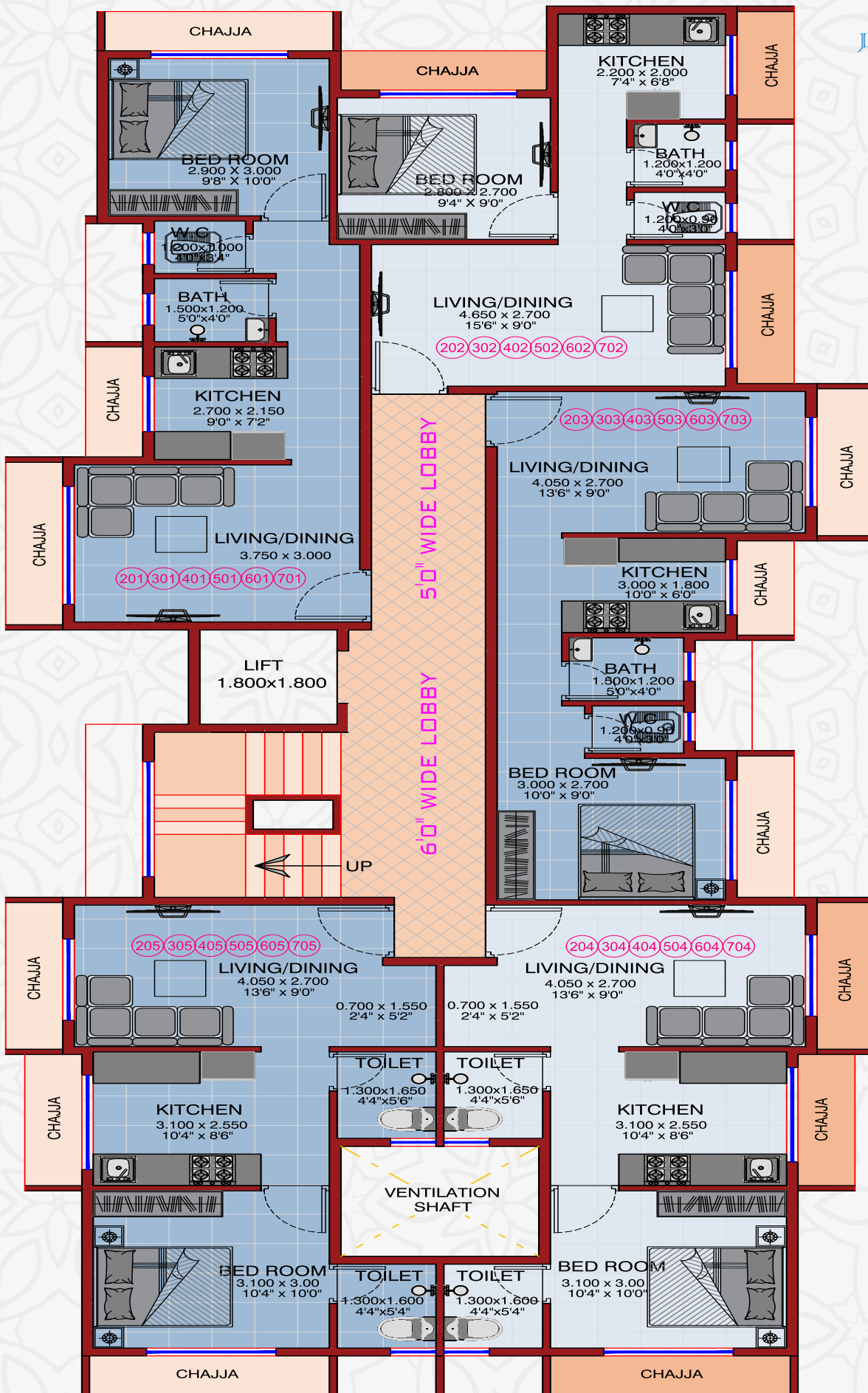
GATE

11.00 M. W I D E R O A D

GROUND FLOOR PLAN



1st FLOOR PLAN



TYPICAL FLOOR PLAN 2 ND TO 7TH

Navi Mumbai
International Airport



Baman Dogri
Railway Station



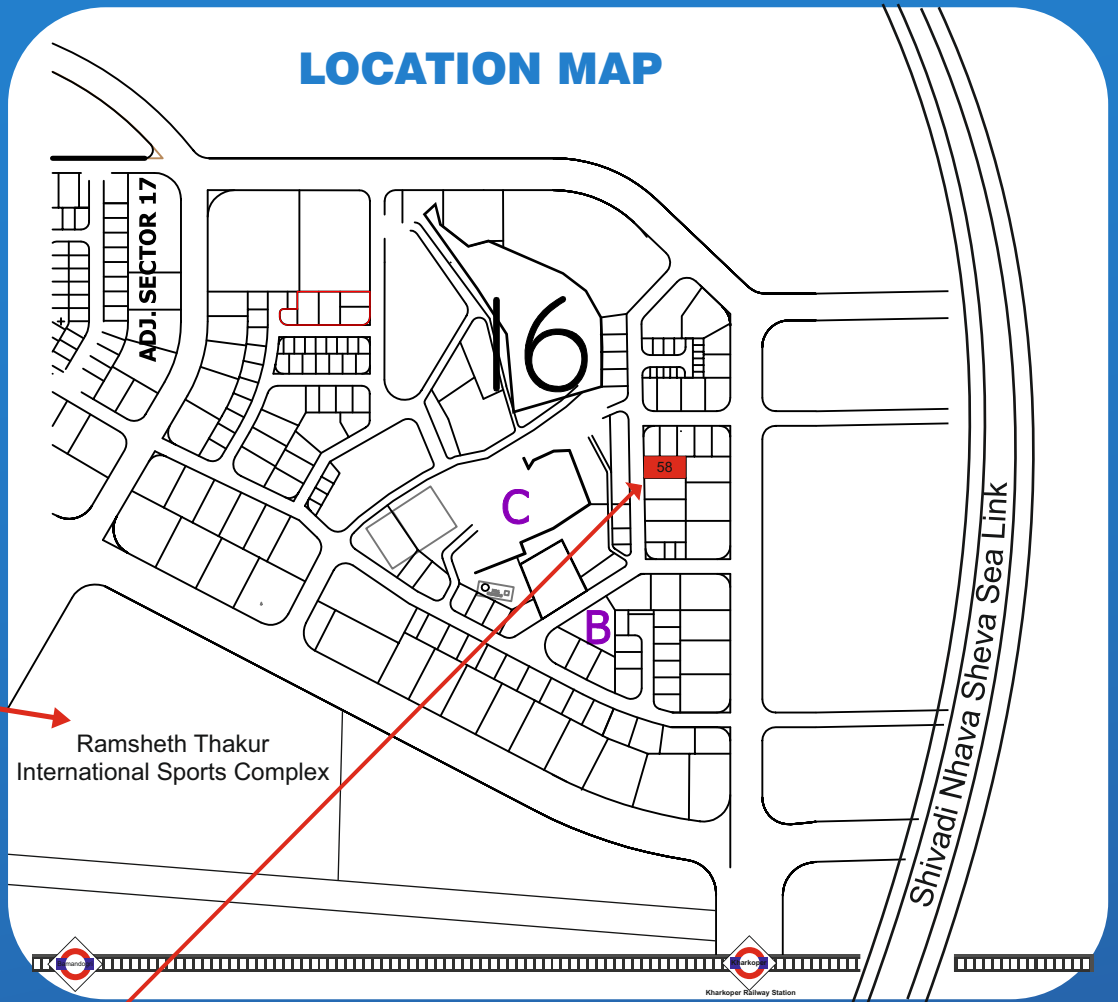
Ramsheth Thakur
International Sports Complex



Shivadi Nhava Sheva Sea Link



LOCATION MAP



Scan the QR
Reach Location



REGISTERED MAHARERA
P52000049239
<https://maharera.mahaonline.gov.in/>



PROJECT BY

**JAYESH INFRASTRUCTURE
& PROJECTS PVT LTD**

ARCHITECT:

KALPAK ARCHITECTS

RCC

Agharkar Consultanting Engineering

**FOR BOOKING
CONTACT**



9221 047 047 / 9967 144 047 / 022 4609 7047



**Office no.215, 2nd Floor, Plot No.51, Thapar Complex,
CBD Belapur, Navi Mumbai 400 614**



info@jayeshinfra.com  www.jayeshinfra.com

Disclaimer : All plans, drawings, amenities, facilities etc are subject to approval of the respective authorities and would be changed. If necessary. The Discretion remains with the developer. All rendering, Floor plans, Pictures and maps are artist's conception and not actual of the building, its walls, roadways or landscaping. This brochure is for guidance purpose only and not a legal document. This brochure should also not be reproduced, copied or made available to others in any transmission. The design & specifications depicted in the brochure are subject to change without prior notice. Proposed development as mentioned in the brochure is subject to approval of competent authorities.